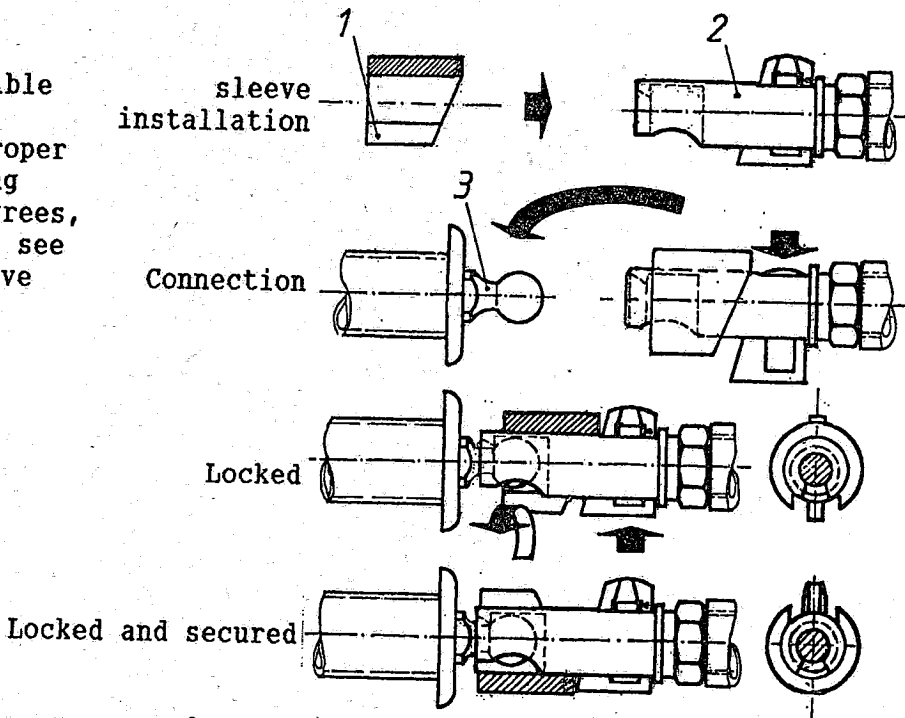


Hotellier Control System Connectors

Prior to assembly, everybody should be familiar with the functioning of the Hotellier control system connectors (a.k.a. ball snap joints or clip and ball coupling). With the locking plate fully pressed, each connector <2> must be engaged fully on the ball <3>. During securing, the locking plate moves slightly backwards. Using the securing sleeve <1>, installation is possible only with the slot facing down. After proper connection and turning the sleeve by 180 degrees, the joint is secured, see also sketch. The sleeve always stays on the connector!



Warning: With connectors unsecured, the locking plate may open under load temporarily ! The locking plate should never be greased !

| | | | |
|--|---|-----------------|---------------------------|
| ROLLADEN-SCHNEIDER Flugzeugbau GmbH | TB-AD-Accomplishment List for Repetitive Inspections | LS3-a LS3-17 | Page 1 Edition Mar. 98 |
|--|---|-----------------|---------------------------|

Sailplane LS3-___ Serial No. _____ TCDS No. _____
 Registration _____ Year of Manufact. _____ Page No. _____
 List opened: _____
 Date + Signature of Inspector: _____

| TB LBA-AD | Component affected | Measure / Modification | Interval | Date Op. Time Stamp Inspec. | Date Op. Time Stamp Inspec. | Date Op. Time Stamp Inspec. | Date Op. Time Stamp Inspec. | Date Op. Time Stamp Inspec. |
|-----------------|--|---|---------------------------------|-----------------------------|-----------------------------|-----------------------------|-----------------------------|-----------------------------|
| --- | C.G. Hook G S/N. _____ | Overhaul | 4 years or 2000 take-offs | --- | --- | --- | --- | --- |
| --- | Nose hook E S/N. _____ | Overhaul | 4 years or 2000 take-offs | --- | --- | --- | --- | --- |
| --- | Safety Harness Type _____ S/N. _____ | Overhaul -exchange of fabric | 12 years | --- | --- | --- | --- | --- |
| 3042 | Securing sleeve for left Hotellier Connectors (Red) | Inspect for proper retaining+ function | each annual inspect. | --- | --- | --- | --- | --- |